

Reading Timetables

Use the timetables to answer the following questions.

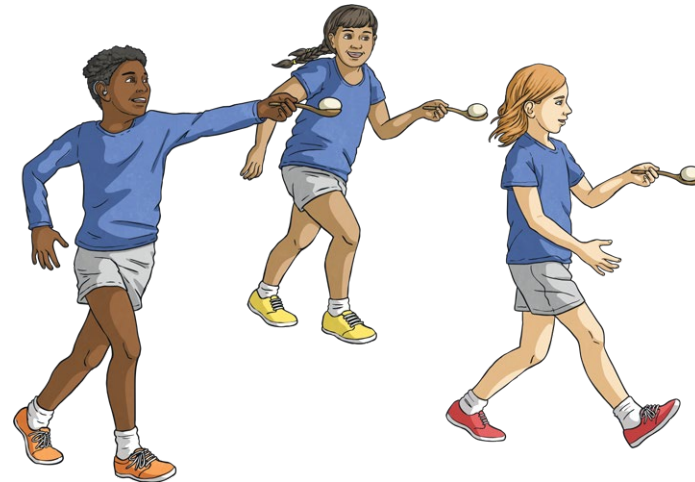
Sports Day	
Event	Time
Short Races	11:00 a.m.
Egg and Spoon Races	11:20 a. m.
Sack Races	_____
Long Races	12:00 p.m.
Lunch	12:30 p.m.
Teachers' Race	1:00 p.m.
Prizes	1:30 p.m.
Hometime	2:00 p.m.

a) How long do the short races last?

b) The egg and spoon races last for 25 minutes. What time will the sack races start?

c) Sarah's dad arrived at 11:00 a.m. and stayed until lunch time. How long did he stay?

d) How long did Sports Day last in total?



Reading Timetables

Use the timetables to answer the following questions.

Bus Timetable	
Bus Stop	Time
Swords	10:15 a.m.
Santry	10:35 a.m.
Drumcondra	10:50 a.m.
O'Connell Street	10:55 a.m.
Ringsend	11:10 a.m.
Sandymount	11:20 p.m.

How long does it take to get from:

- a) Swords to Santry? _____
- b) Drumcondra to O'Connell Street? _____
- c) Ringsend to Sandymount? _____

2. How long does it take to get from:

- a) Santry to Ringsend? _____
- b) O'Connell Street to Sandymount? _____
- c) Swords to Sandymount? _____



Reading Timetables

Use the timetables to answer the following questions.

Cinema Times		
Film	Time	Duration
The Fairy Tree	4:00 p.m.	_____
Charlie's Day Out	6:30 p.m.	100 minutes
Galaxy Warriors	7:15 p.m.	105 minutes
The Dealbreaker	9:00 p.m.	120 minutes

1. Calculate the duration of the films in hours and minutes.

a) Charlie's Day Out

_____ hours and _____ minutes

b) Galaxy Warriors

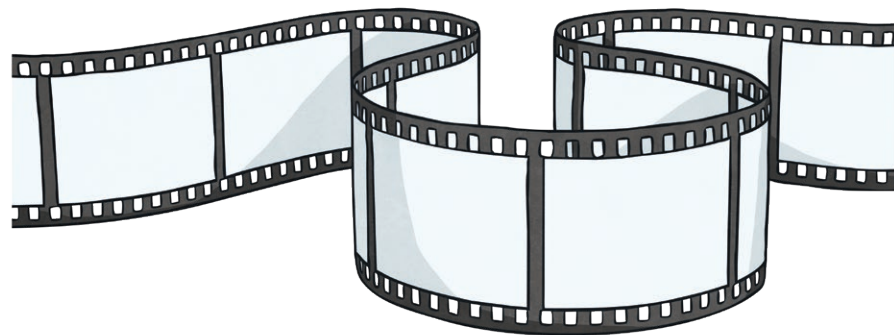
_____ hours and _____ minutes

a) The Dealbreaker

_____ hours and _____ minutes

2. Daisy went to see 'The Fairy Tree'. The film finished at 5:10 p.m. How long was the film in minutes? Add the duration to complete the timetable.

3. Max's family went to see 'The Dealbreaker'. What time did the film end?



Reading Timetables **Answers**

Use the timetables to answer the following questions.

a) How long do the short races last?

20 minutes

b) The egg and spoon races last for 25 minutes. What time will the sack races start?

11:45 a.m.

c) Sarah's dad arrived at 11:00 a.m. and stayed until lunch time. How long did he stay?

An hour and a half / 90 minutes

d) How long did Sports Day last in total?

Three hours

Reading Timetables **Answers**

Use the timetables to answer the following questions.

1. How long does it take to get from:
 - a) Swords to Santry? **20 minutes**
 - b) Drumcondra to O'Connell Street? **5 minutes**
 - c) Ringsend to Sandymount? **10 minutes**
2. How long does it take to get from:
 - a) Santry to Ringsend? **35 minutes**
 - b) O'Connell Street to Sandymount? **25 minutes**
 - c) Swords to Sandymount? **1 hour and 5 minutes**

Reading Timetables Answers

Use the timetables to answer the following questions.

Cinema Times		
Film	Time	Duration
The Fairy Tree	4:00 p.m.	70 minutes
Charlie's Day Out	6:30 p.m.	100 minutes
Galaxy Warriors	7:15 p.m.	105 minutes
The Dealbreaker	9:00 p.m.	120 minutes

Calculate the duration of the films in hours and minutes.

- a) Charlie's Day Out
1 hour and 40 minutes
 - b) Galaxy Warriors
1 hours and 45 minutes
 - a) The Dealbreaker
2 hours and 0 minutes
2. Daisy went to see 'The Fairy Tree'. The film finished at 5:10 p.m. How long was the film in minutes? Add the duration to complete the timetable.
3. Max's family went to see 'The Dealbreaker'. What time did the film end?
11:00 p.m.